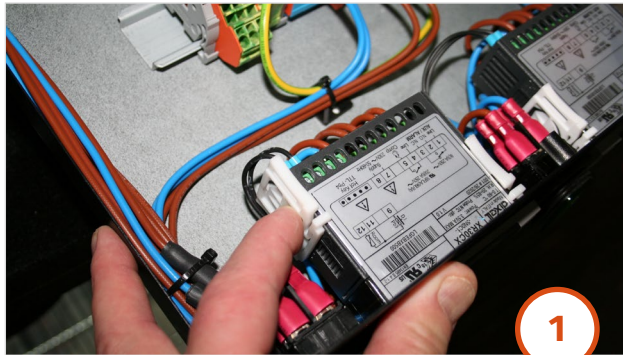


How to guide

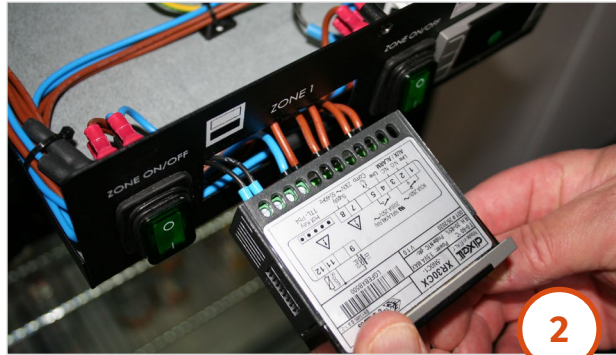
Flexeserve Zone® - Replacing a Dixell controller

NOTE

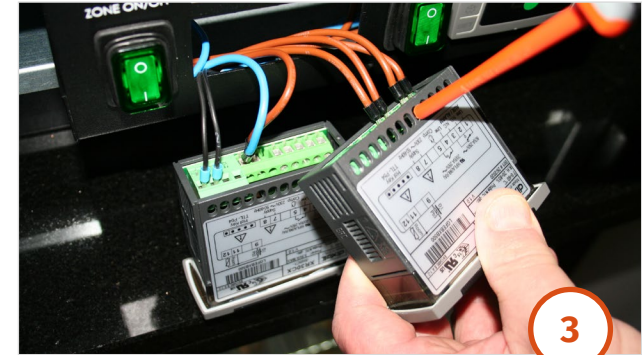
Ensure that the unit is switched off and disconnected from the power supply when carrying out this task. Remove the door to access the control panel, by removing the fixings with a 3mm hex key.



Push in the centre of both of the white clips and slide towards the rear of the unit to remove them.



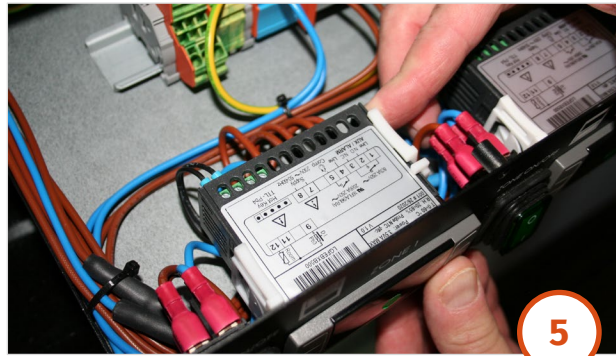
Pull the Dixell controller towards you out of the control panel.



Removing the cables one by one, rewire into the new Dixell controller terminals respectively, ensuring a secure connection.



Push the new Dixell controller into the housing in the control panel.



Refit the white clips by sliding them onto the back of the Dixell controller, slide them to the front to hold it firmly in position.



Replace the door and power on the unit to ensure all functions are operational.