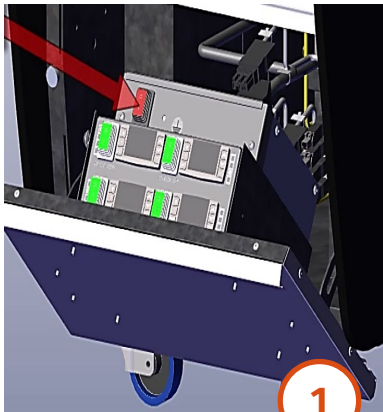


# How to guide

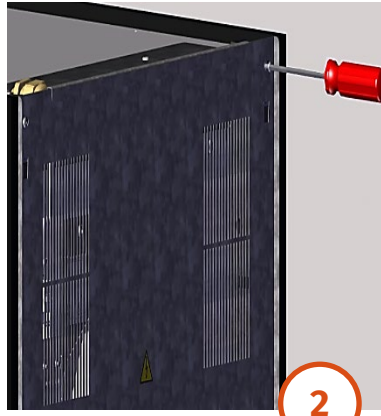
## Flexeserve Zone® - Replacing a fan plate

### NOTE

Ensure that the unit is switched off and disconnected from the power supply when carrying out this task.



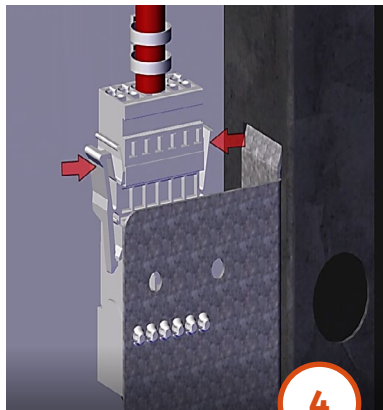
- Ensure that the unit is fully isolated from the mains supply.



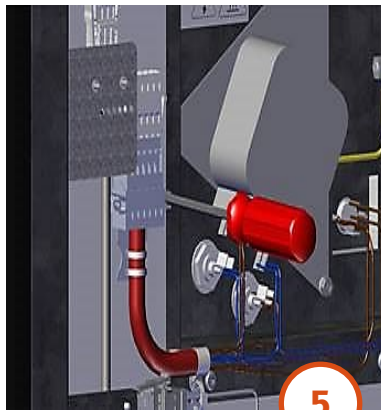
- Undo fixings in top rear back panel using a 2.5mm hex key. *Note: A 3mm hex key is required on countertop units.*



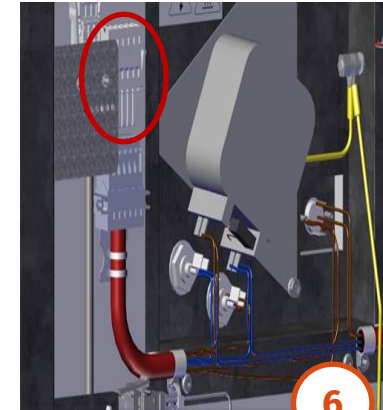
- Remove top rear back panel and lower ones (as required) by pushing them up and away from the unit.



- Unplug the fan cable from the loom.



- Remove the fan plug by removing the M3 screws using a PZ1 screwdriver.



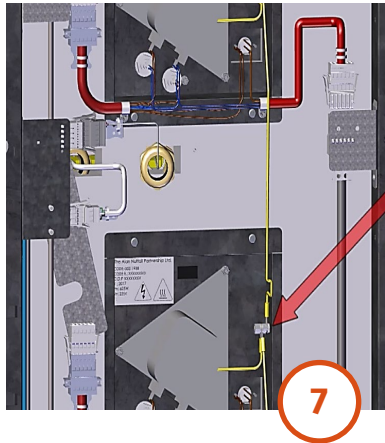
- Remove the blank off plug and keep to one side for replacement fan plate.

# How to guide

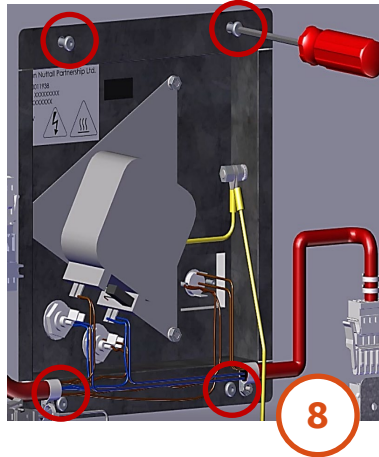
## Flexeserve Zone® - Replacing a fan plate

### NOTE

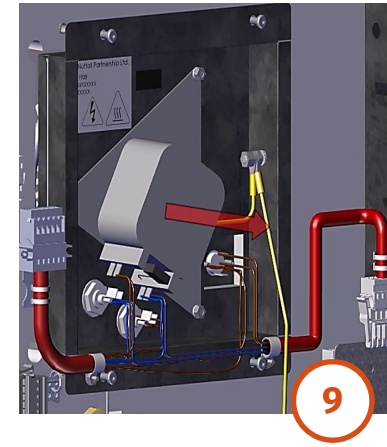
Ensure that the unit is switched off and disconnected from the power supply when carrying out this task.



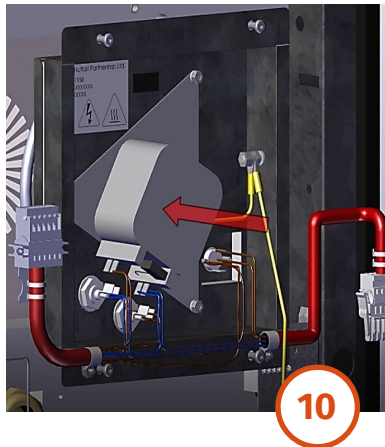
- Remove the earth link from the next fan in series using a 10mm wrench.



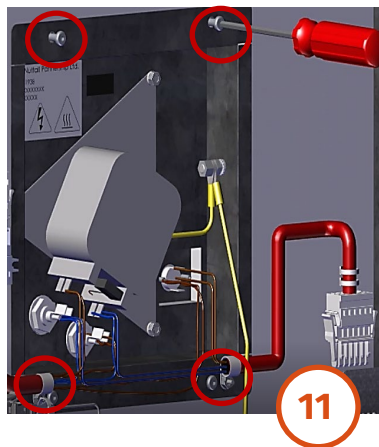
- Undo the four fixings on the rear of the fan plate using a 3mm hex key.



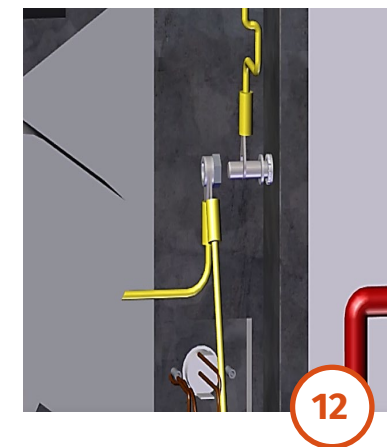
- Pull the fan plate slowly out of the rear back panel.



- Fit the replacement fan plate into the rear back panel.



- Refit the four M5 fixings into the fan plate using a 3mm hex key.



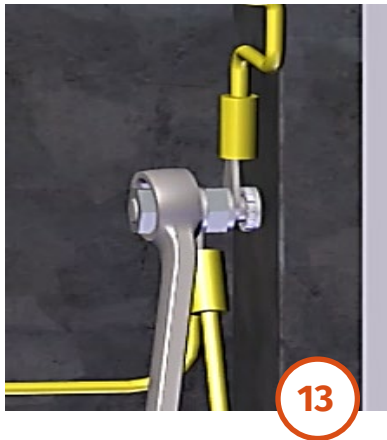
- Re-attach the earth cable to the next fan in series using a 10mm spanner.

# How to guide

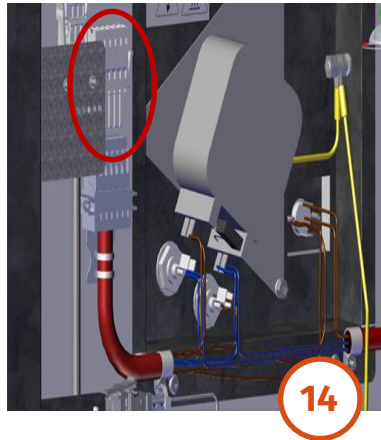
## Flexeserve Zone® - Replacing a fan plate

### NOTE

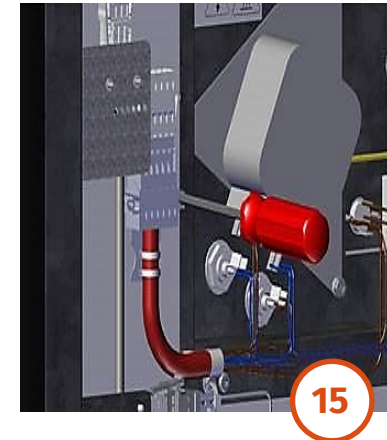
Ensure that the unit is switched off and disconnected from the power supply when carrying out this task.



- Ensure that the safety earth link is refitted before re-energising the unit.



- Insert the blank off plug into the fan plug.



- Screw the fan plug into position using the M3 screws and a PZ1 screwdriver.



- Plug the fan cable back into the wiring loom.



- Replace all applicable back panels, ensuring that all M4 fixings are refitted to the top rear back panel.